



MONTHLY MEMBERSHIP PROGRESS REPORT

District 120

Results as of: 10/31/2017

GMT: ANTTI FORSELL

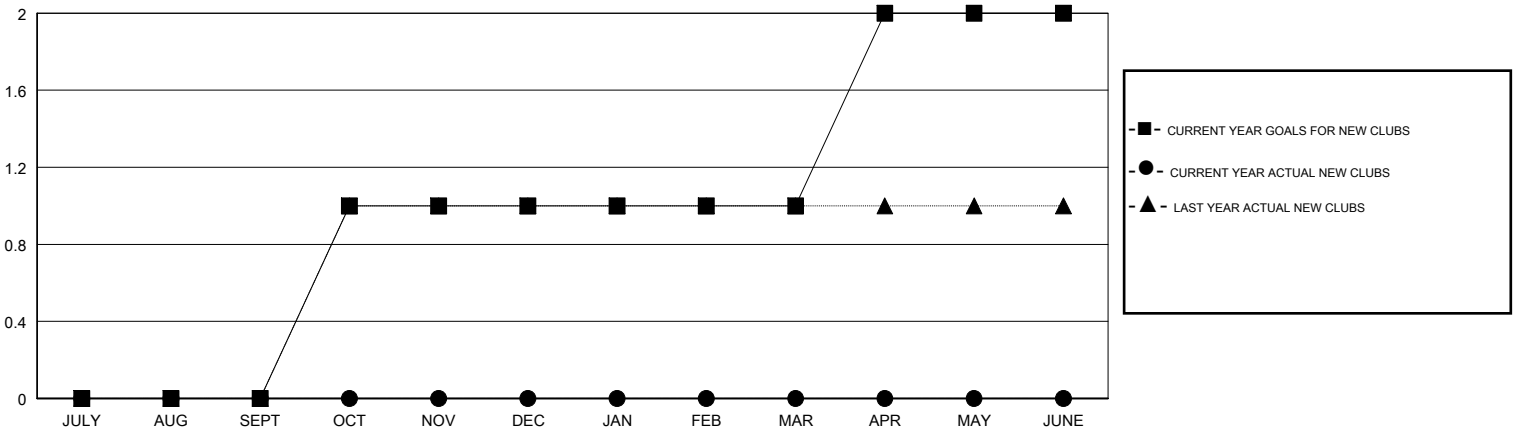
LOCATION ESTONIA

GMT CA

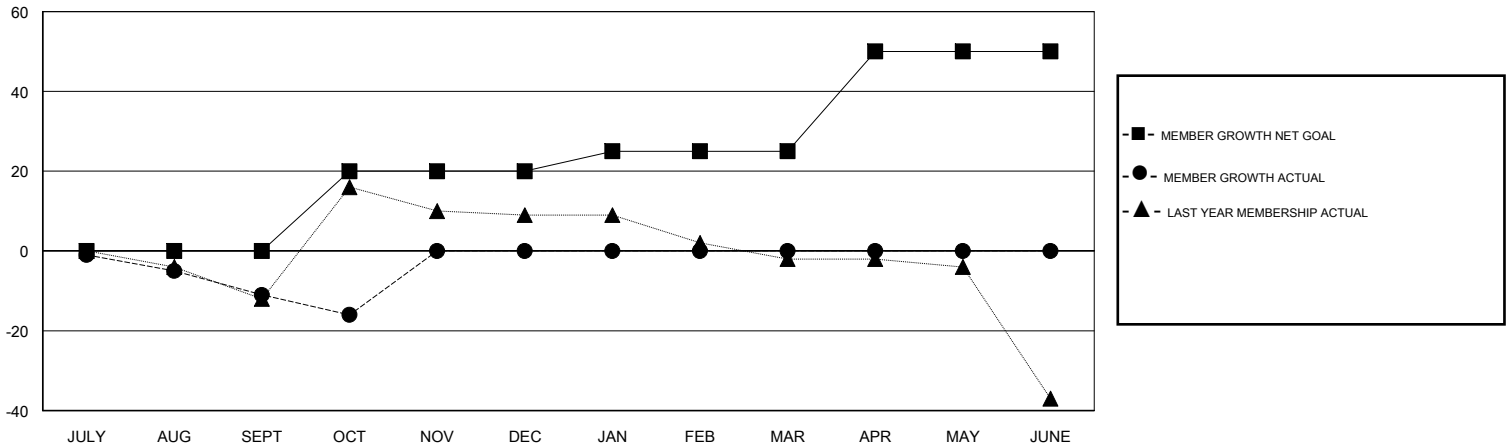
Clubs			
RESULTS FOR 2017-2018			
QUARTER	NEW CLUB GOAL	NEW CLUBS	DROPPED CLUBS
JULY/AUG/SEPT	0	0	2
OCT/NOV/DEC	1	0	0
JAN/FEB/MAR	0	0	0
APR/MAY/JUNE	1	0	0

Members			
RESULTS FOR 2017-2018			
QUARTER	MEMBER GROWTH NET GOAL	MEMBER GROWTH ACTUAL	DROPPED MEMBERS ACTUAL (including transfers)
JULY/AUG/SEPT	0	5	16
OCT/NOV/DEC	20	5	10
JAN/FEB/MAR	5	0	0
APR/MAY/JUNE	25	0	0

GOALS AND ACTUAL NEW CLUBS CUMULATIVE



GOALS AND ACTUAL MEMBERS CUMULATIVE



DROPPED CLUBS: 2	9 CLUBS OF 61 ADDED 1 OR MORE NEW MEMBERS	<u>GENDER DISTRIBUTION</u>	
DROPPED MEMBERS		MALE	867 (71.53%)
DECEASED	2	FEMALE	345 (28.47%)
CLUB CANCELLED	0	Women Percentage Fiscal Year Goal: 31%	
OTHER	24	TOTAL FAMILY UNIT MEMBERS	81
TOTAL	26	FAMILY MEMBERS PAYING HALF DUES	42

[CLICK HERE FOR CUMULATIVE MEMBERSHIP DATA](#)